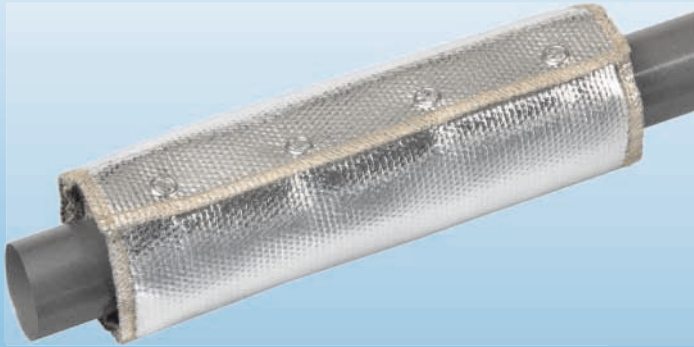


Heat insulation



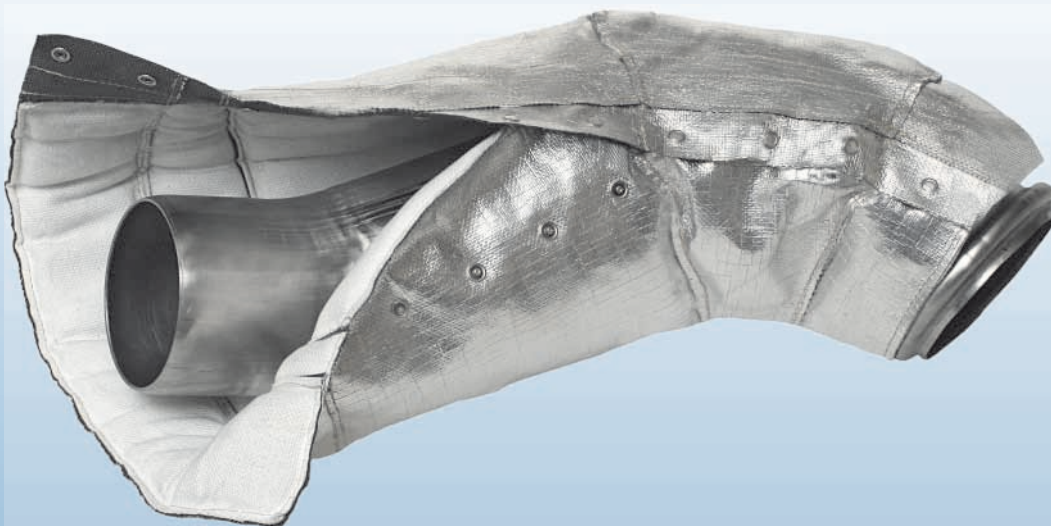
Extreme temperature
heat barrier



INSUFLECTTM

550°C/650°C

Turbo exhaust temperature insulation



ZT[®]



INSUFLECTTM

550°C/650°C



Aluminized Fiberglass Composite Jacket

Extreme temperature heat barrier designed to retain heat in a protected pipe or covered component. Ideal for maintaining turbo exhaust temperature while minimizing heat damage to surrounding components. Temperature ranges up to 650°C continuous. Material is wrapped around the heat source using stainless-steel snap buttons for closure. Sewn with stainless-steel thread.

Technical Data:

Types	INSUFLECT-550	INSUFLECT-650
Jacket (outer)	SAM-1000	
Material	Al / silicone coated fiberglass	
Thickness	0,8 mm	
Weight	900 g/m ²	
Weave	linen	
Color	ALUMINIUM / BLACK	
Flammability	self-extinguishing	
Temperature	240 °C continuous / 270 °C minutes	
Filler (middle)		
Material	fiberglass mat	
Thickness	13 mm approx.	
Color	WHITE	
Thermal conductivity	650 °C	
Liner (inner)		
Material	woven fiberglass	woven fiberglass
Thickness	0,8 mm	0,8 mm
Density	640 g/m ²	640 g/m ²
Color	HONEY	WHITE
Temperature	550 °C continuous / 600 °C minutes	650 °C continuous / 700 °C minutes

This data-sheet is subject to changes without notice

ZIPPER-TECHNIK GmbH

P.O. Box 1853 DE-63238 Neu-Isenburg

Tel. +49-(0)6102-7387-0 Fax +49-(0)6102-34034

e-mail: zipper@zipper-technik.de Internet: www.zipper-technik.de

